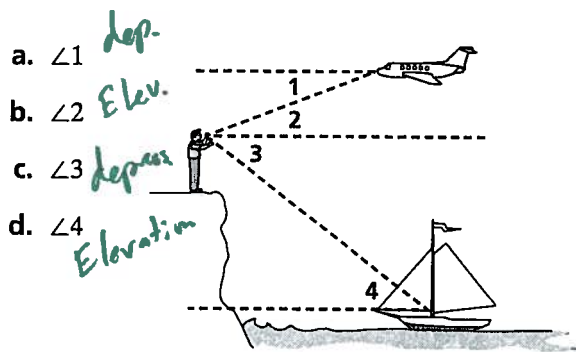
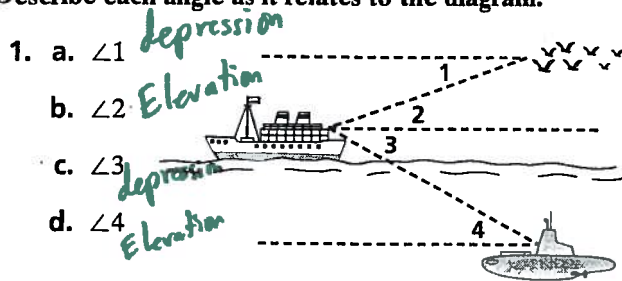


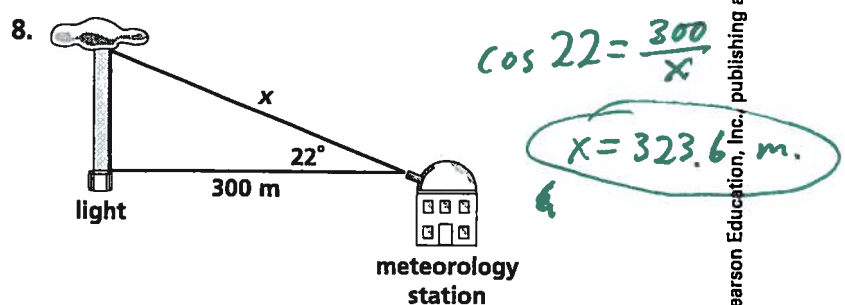
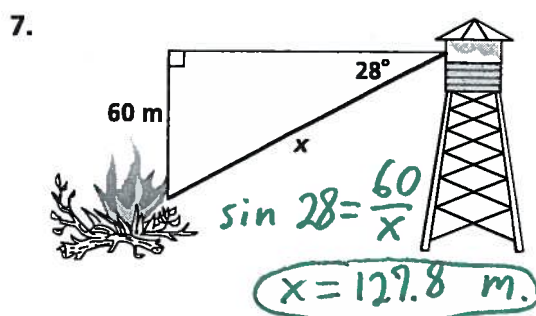
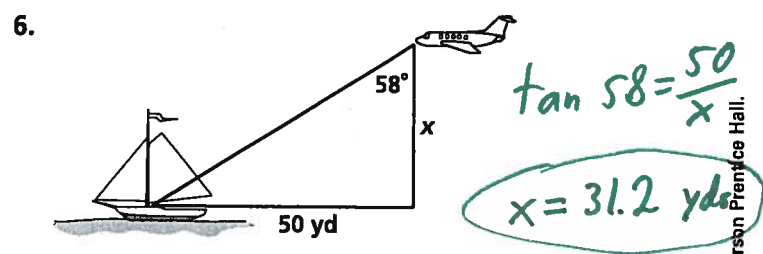
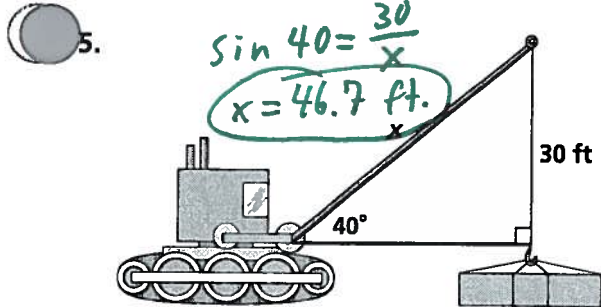
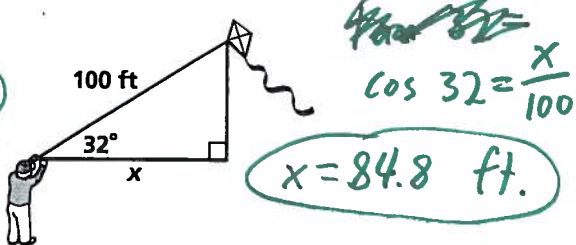
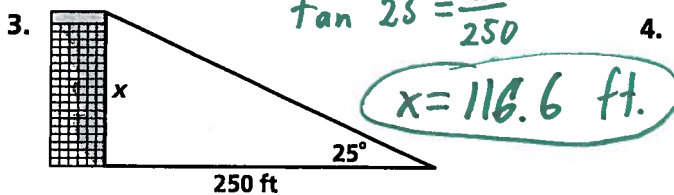
Practice 8-5

Angles of Elevation and Depression

Describe each angle as it relates to the diagram.

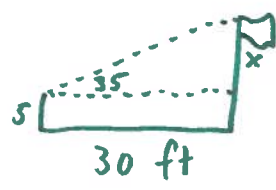


Find the value of x . Round the lengths to the nearest tenth.



9. A person standing 30 ft from a flagpole can see the top of the pole at a 35° angle of elevation.
 a. Draw a diagram.
 b. The person's eye level is 5 ft from the ground. Find the height of the flagpole to the nearest foot.

$\tan 35 = \frac{x}{30}$
 $x = 21$



flag height is $x + 5$ so 26 ft.

© Pearson Education, Inc., publishing as Pearson Prentice Hall. All rights reserved.